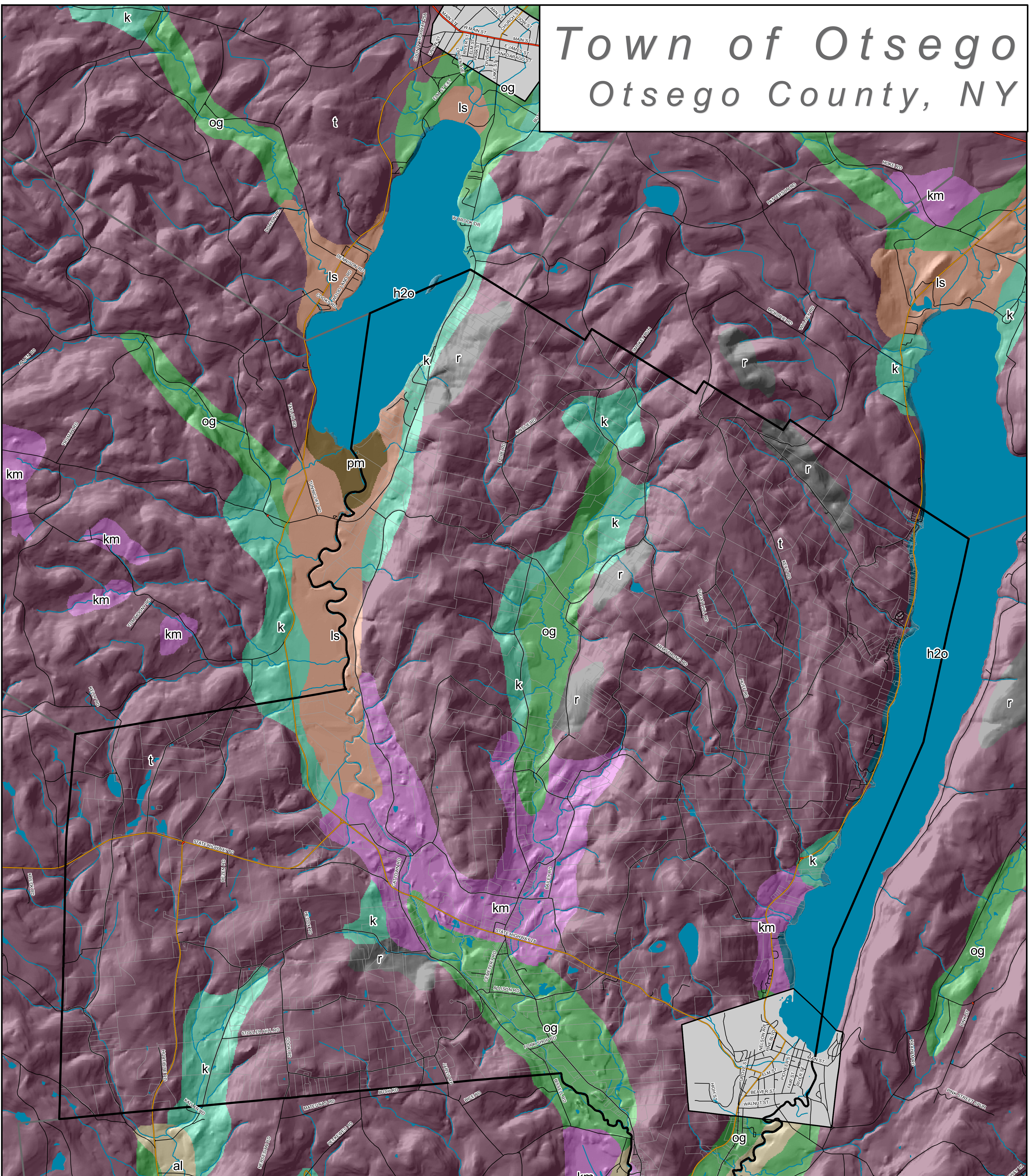


Town of Otsego

Otsego County, NY



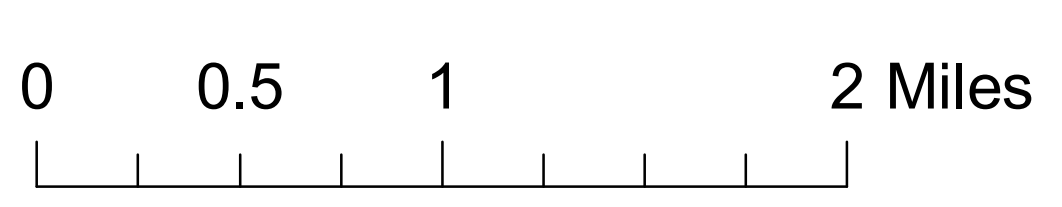
Surficial Geology

- Town Boundary
- Village Boundaries
- Surrounding Town Boundaries
- Property Boundaries
- Water
- Streams

Surficial Geology

- Till: Deposition beneath the ice, Till Variable texture (boulders to silt),
- Glaciustrine & Marine: Lake & Marine Deposition, Lacustrine sand
- Glaciustrine & Marine: Lake & Marine Deposition, Lacustrine silt and clay
- Glaciofluvial: Stream deposition adjacent or in front of the ice, Kame deposits
- Glaciofluvial: Stream deposition adjacent or in front of the ice, Outwash sand and gravel
- Moraine: Sedimentation of a glacier ice margin, Kame moraine
- Fluvial: Stream Deposition, Recent alluvium
- Bedrock, Bedrock
- Miscellaneous, Swamp deposits
- Water, Water

Draft Map Date:
4-20-2006



**Community Planning &
Environmental Associates**
152 Stolzenburg Road, Berne, New York 12023
Nan Stolzenburg AICP - www.planningbetterplaces.com
Don Meltz Planning and GIS - www.donmeltz.com