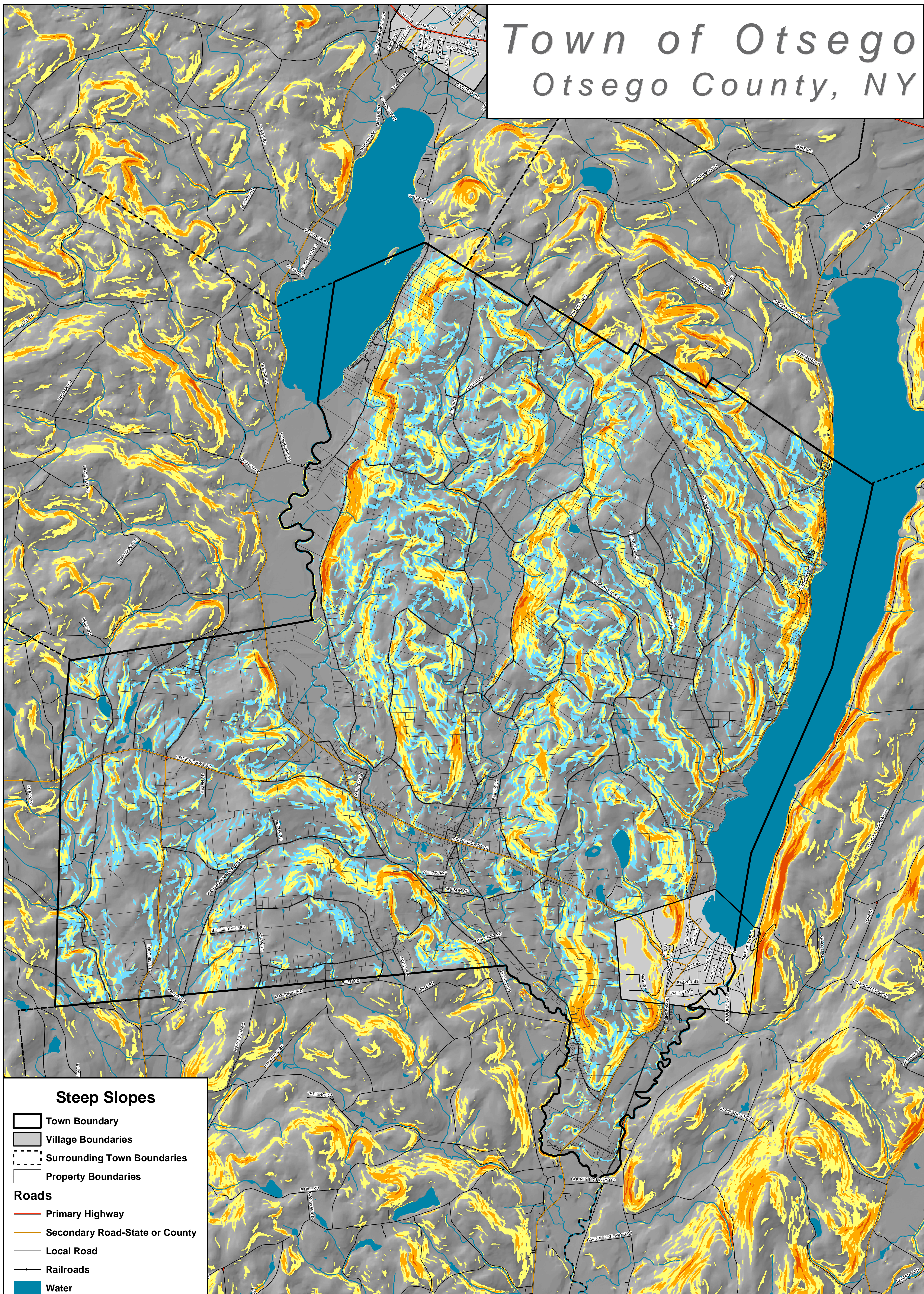


Town of Otsego

Otsego County, NY



Steep Slopes

- Town Boundary
- Village Boundaries
- Surrounding Town Boundaries
- Property Boundaries

Roads

- Primary Highway
- Secondary Road-State or County
- Local Road
- Railroads

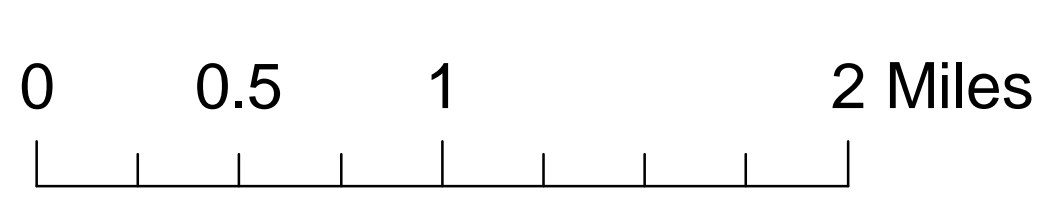
Water

- Water
- Streams
- Slopes 15 to 20%

Steep Slopes

- 20 to 25%
- 25 to 45%
- Over 45%

Draft Map Date:
10-16-2006



**Community Planning &
Environmental Associates**

152 Stolzenburg Road, Berne, New York 12023

Nan Stolzenburg AICP - www.planningbetterplaces.com
Don Meltz Planning and GIS - www.donmeltz.com